

直流伺服电机 DC Servomotor

- ◎ Type: TN2P57 Brushed Motors
- ◎ Specification: TN2P57

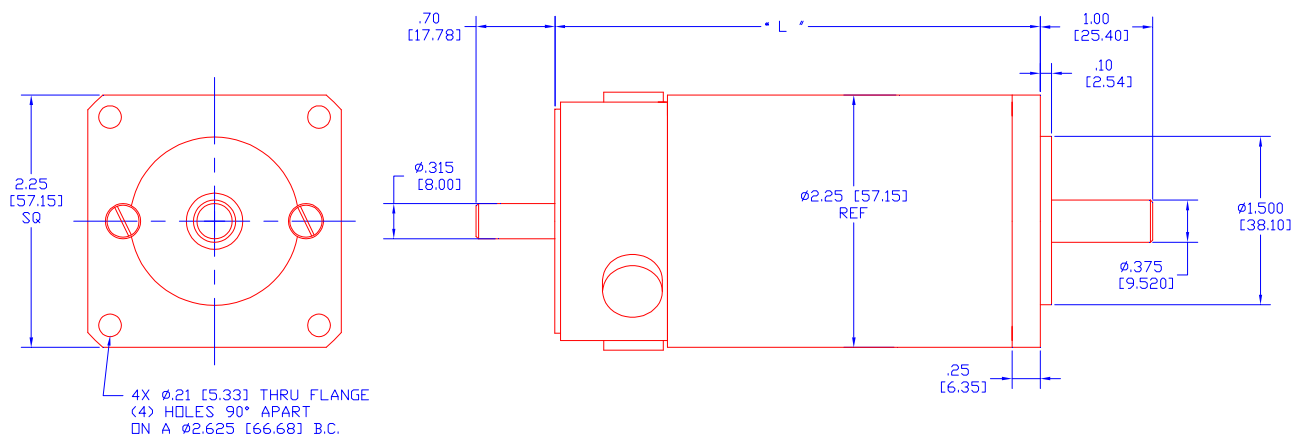


TN Brushed

TN2P57 系列直流有刷伺服电机

电机型号	连续转矩 Tc oz-in (N.m)	峰值扭矩 Tp oz-in (N.m)	推荐最高 转速 RPM	输出功率 W	转动惯量 oz-in-sec ² (Kg-cm ²)	电机长度 L Inch (mm)	重量 Lb (Kg)
TN2P57-07	21 (0.15)	180 (1.27)	5000	57	0.0046 (0.325)	4.31 (109.5)	2.2 (1.0)
TN2P57-09	30 (0.21)	280 (1.98)	5000	85	0.006 (0.424)	4.82 (122.4)	2.6 (1.2)
TN2P57-12	45 (0.32)	350 (2.47)	5000	119	0.008 (0.565)	5.56 (141.2)	3.3 (1.5)
TN2P57-16	65 (0.46)	421 (2.97)	5000	170	0.011 (0.777)	6.56 (166.6)	4.9 (2.2)

电机外形尺寸:



注: 电机的前、后输出轴直径和长度, 法兰连接方式和螺钉孔径可按客户的特殊要求定制

直流伺服电机 DC Servomotor

- ◎ Type: TN2P57 Brushed Motors
- ◎ Specification: TN2P57



TN Brushed

TN2P57 系列电机典型性能参数（可按客户要求提供 OEM 定制其他参数）

符号	单位	型号				
		TN2P57-07D	TN2P57-09C	TN2P57-12E	TN2P57-16D	
Ke	Back E.M.F	Volts/KRPM	6.0	5.6	12.1	12.0
Kt	Torque Constant	oz-in/Amp (mN.m/Amp)	8.1 (57.3)	7.6 (53.5)	16.4 (115.6)	16.2 (114.6)
Rt	Terminal Resistance	Ohms	1.00	0.62	1.75	1.30
L	Inductance	mH	1.1	0.76	2.46	2.03
Rth	Thermal Resistance	Deg C/Watt	4.9	4.4	3.8	2.9
Vt	Voltage Terminal	V dc	24	24	48	48
n _o	No load Speed @ Vt	RPM	4000	4286	3967	4000
I _o	No load Current @ Vt	Amp	0.55	0.60	0.28	0.32
T _c	Cont. Torque	oz-in (N.m)	21 (0.15)	30 (0.21)	45 (0.32)	65 (0.46)
n _c	Speed @ Vt & Tc	RPM	3558	3847	3569	3569
I _c	Current @ Vt & Tc	Amp	3.2	4.6	3.0	4.3
P _o	Power Out @ Vt & Tc	Watts	57	85	119	170
T _p	Peak Torque	oz-in (N.m)	42 (0.30)	59 (0.42)	91 (0.64)	129 (0.91)
n _p	Speed @ Vt & T _p	RPM	3117	3409	3172	3139
I _p	Current @ Vt & T _p	Amp	5.8	8.5	5.8	8.3

注：电机反馈可按客户要求安装增量或绝对式编码器、旋转变压器、测速发电机等装置