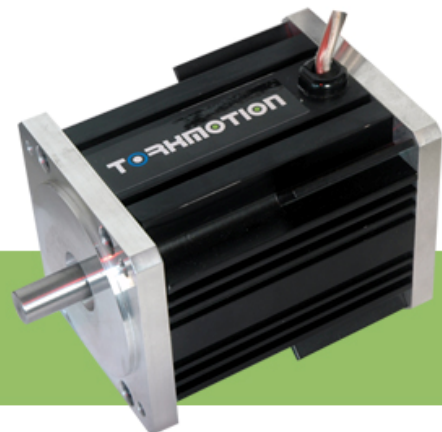


交流伺服电机 AC Servomotor

- ◎ Type: MT8N87 Brushless Motors
- ◎ Specification: MT8N87

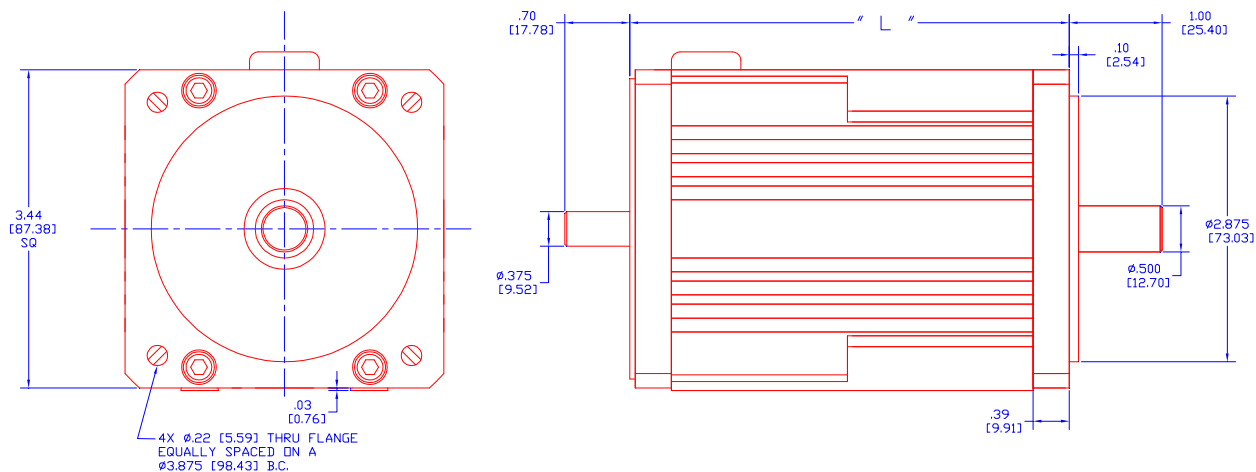


MT Brushless

MT8N87 系列无刷伺服电机

电机型号	连续转矩 Tc oz-in (N.m)	峰值转矩 Tp oz-in (N.m)	推荐最高 转速 RPM	输出功率 W	转动惯量 oz-in-sec ² (Kg-cm ²)	电机长度 L Inch (mm)	重量 Lb (Kg)
MT8N87-08	283 (2.0)	850 (6.0)	6000	710	0.0076 (0.538)	4.74 (120.4)	3.7 (1.7)
MT8N87-12	354 (2.5)	1048 (7.4)	6000	929	0.0113 (0.796)	5.74 (145.8)	5.1 (2.3)
MT8N87-16	453 (3.2)	1345 (9.5)	6000	1108	0.0156 (1.1)	6.74 (171.2)	6.6 (3.0)
MT8N87-20	552 (3.9)	1643 (11.6)	6000	1389	0.0184 (1.3)	7.74 (196.6)	7.9 (3.6)

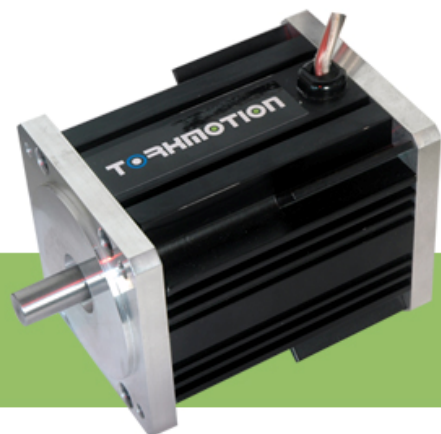
电机外形尺寸:



注: 电机的前、后输出轴直径和长度, 法兰连接方式和螺钉孔径可按客户的特殊要求定制

交流伺服电机 AC Servomotor

- ◎ Type: MT8N87 Brushless Motors
- ◎ Specification: MT8N87



MT Brushless

MT8N87 系列电机典型性能参数（可按客户要求提供 OEM 定制其他参数）

符号		单位	型号			
			MT8N87-08F	MT8N87-12D	MT8N87-16C	MT8N87-20E2
Ke	Back E.M.F	Volts/KRPM	24.4	22.7	24.5	23.8
Kt	Torque Constant	oz-in/Amp (mN.m/Amp)	33.0 (233.0)	30.7 (216.8)	33.1 (234.0)	32.2 (227.3)
Rt	Terminal Resistance	Ohms	0.90	0.75	0.62	0.51
L	Inductance	mH	1.75	1.68	1.43	1.14
Rth	Thermal Resistance	Deg C/Watt	0.52	0.51	0.49	0.48
Vt	Voltage Terminal	V dc	90	90	90	90
n _o	No load Speed @ Vt	RPM	3689	3965	3673	3782
I _o	No load Current @ Vt	Amp	0.50	0.45	0.43	0.40
T _c	Cont. Torque	oz-in (N.m)	285 (2.01)	350 (2.47)	450 (3.18)	549 (3.88)
n _c	Speed @ Vt & Tc	RPM	3370	3588	3330	3415
I _c	Current @ Vt & Tc	Amp	9.1	11.9	14.0	17.5
P _o	Power Out @ Vt & Tc	Watts	710	929	1108	1389
T _p	Peak Torque	oz-in (N.m)	571 (4.03)	700 (4.94)	901 (6.36)	1100 (7.77)
n _p	Speed @ Vt & T _p	RPM	3051	3211	2986	3049
I _p	Current @ Vt & T _p	Amp	17.8	23.3	27.6	34.6

注：电机反馈可按客户要求安装增量或绝对式编码器、旋转变压器、测速发电机等装置