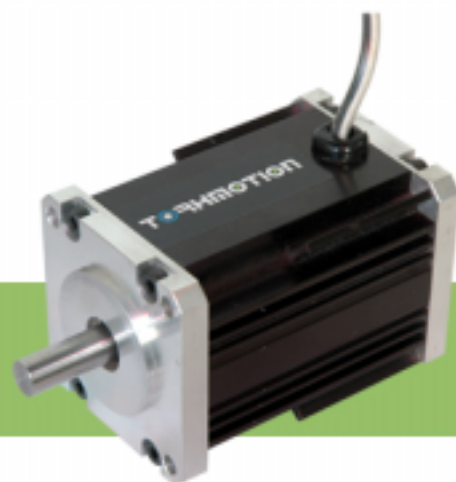


交流伺服电机 AC Servomotor

- ◎ Type: MT8N57 Brushless Motors
- ◎ Specification: MT8N57

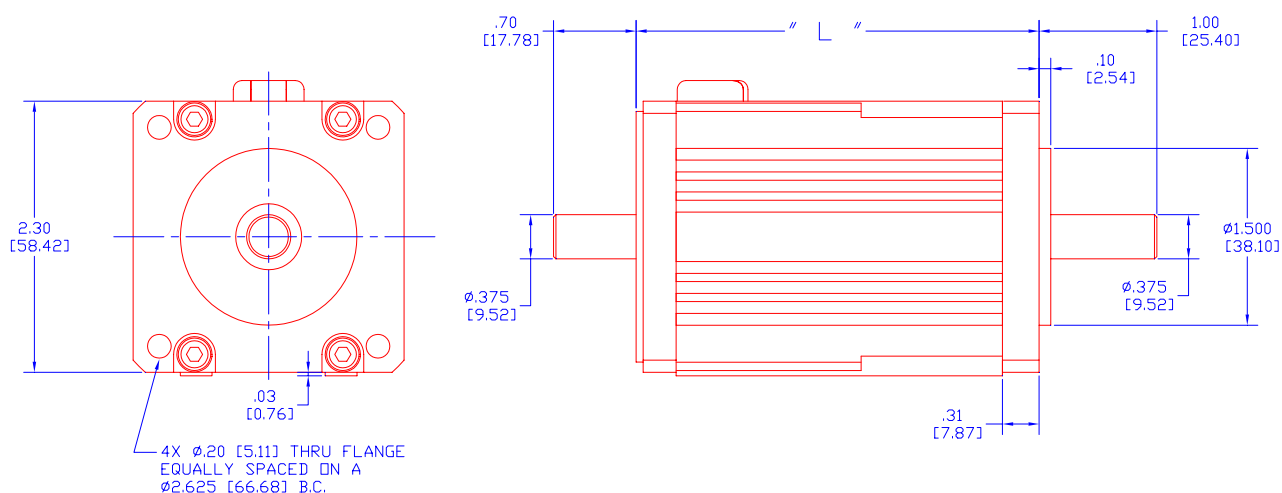


MT Brushless

MT8N57 系列无刷伺服电机

电机型号	连续转矩 Tc oz-in (N.m)	峰值转矩 Tp oz-in (N.m)	推荐最高 转速 RPM	输出功率 W	转动惯量 oz-in-sec ² (Kg-cm ²)	电机长度 L Inch (mm)	重量 Lb (Kg)
MT8N57-08	142 (1.0)	425 (3.0)	6000	349	0.0019 (0.132)	3.92 (99.6)	1.8 (0.8)
MT8N57-10	180 (1.27)	540 (3.81)	6000	452	0.0023 (0.164)	4.42 (112.3)	2.0 (0.9)
MT8N57-12	200 (1.41)	599 (4.23)	6000	529	0.0028 (0.195)	4.92 (125.0)	2.2 (1.0)
MT8N57-16	239 (1.69)	718 (5.07)	6000	613	0.0037 (0.259)	5.92 (150.4)	2.6 (1.2)

电机外形尺寸：

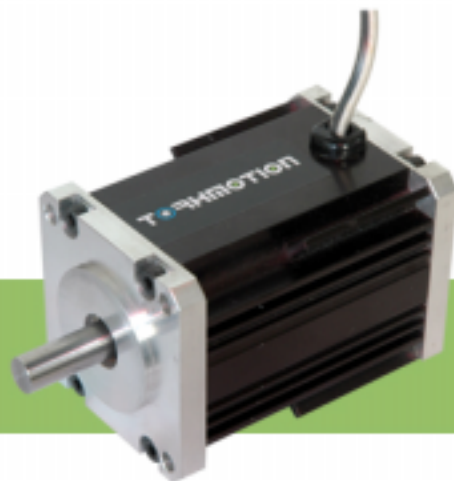


注：电机的前、后输出轴直径和长度，法兰连接方式和螺钉孔径可按客户的特殊要求定制

交流伺服电机 AC Servomotor

- ◎ Type: MT8N57 Brushless Motors
- ◎ Specification: MT8N57

MT Brushless



MT8N57 系列电机典型性能参数 (可按客户要求提供 OEM 定制其他参数)

符号	单位	型号				
		MT8N57-08E	MT8N57-10D	MT8N57-12F2	MT8N57-16E2	
Ke	Back E.M.F	Volts/KRPM	12.0	11.8	11.2	11.7
Kt	Torque Constant	oz-in/Amp (mN.m/Amp)	16.2 (114.6)	16.0 (112.7)	15.2 (107.0)	15.8 (111.7)
Rt	Terminal Resistance	Ohms	0.90	0.70	0.60	0.50
L	Inductance	mH	1.35	1.04	0.78	0.54
Rth	Thermal Resistance	Deg C/Watt	0.95	0.85	0.80	0.75
Vt	Voltage Terminal	V dc	48	48	48	48
n _o	No load Speed @ Vt	RPM	4000	4068	4286	4103
I _o	No load Current @ Vt	Amp	0.50	0.45	0.42	0.40
T _c	Cont. Torque	oz-in (N.m)	142 (1.00)	180 (1.27)	200 (1.41)	239 (1.69)
n _c	Speed @ Vt & Tc	RPM	3348	3399	3578	3454
I _c	Current @ Vt & Tc	Amp	9.2	11.7	13.6	15.6
P _o	Power Out @ Vt & Tc	Watts	349	452	529	613
T _p	Peak Torque	oz-in (N.m)	282 (1.99)	360 (2.54)	399 (2.82)	480 (3.39)
n _p	Speed @ Vt & Tp	RPM	2697	2730	2871	2806
I _p	Current @ Vt & Tp	Amp	17.9	23.0	26.8	30.7

注：电机反馈可按客户要求安装增量或绝对式编码器、旋转变压器、测速发电机等装置